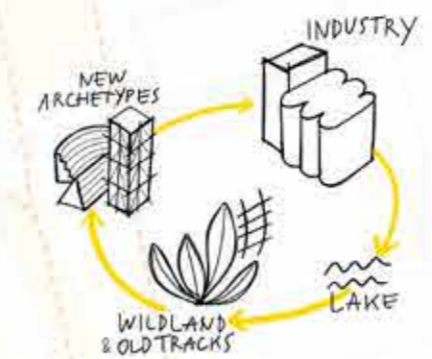


ny väg! ny väg! ny väg!

move around

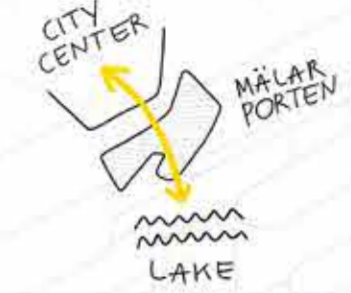
S IDENTITY & PUBLIC SPACE SYSTEM



M DISTRICT INFRASTRUCTURE



L LINK BETWEEN THE CITY & THE LAKE



NY VÄG is a metabolic infrastructure that works as an open platform for people to explore, learn, meet, imagine and experiment life in Mälarporten, that during the construction time will become a mutable experimental district, based on accessibility, inclusion, participation and on the creative potential of people and places.

NY VÄG is an open and modifiable system capable of welcoming new flows, ideas, inputs and transforming itself according to the needs of the community.

It is composed by a main spine and its changeable nodes:

- the pathway (flow), that is not a quick-crossing way but a slow exploring track for soft mobility
- the transformable archetypes (places) that allow to experiment different ways of living in relation to people's need together with the specificity of the sites.

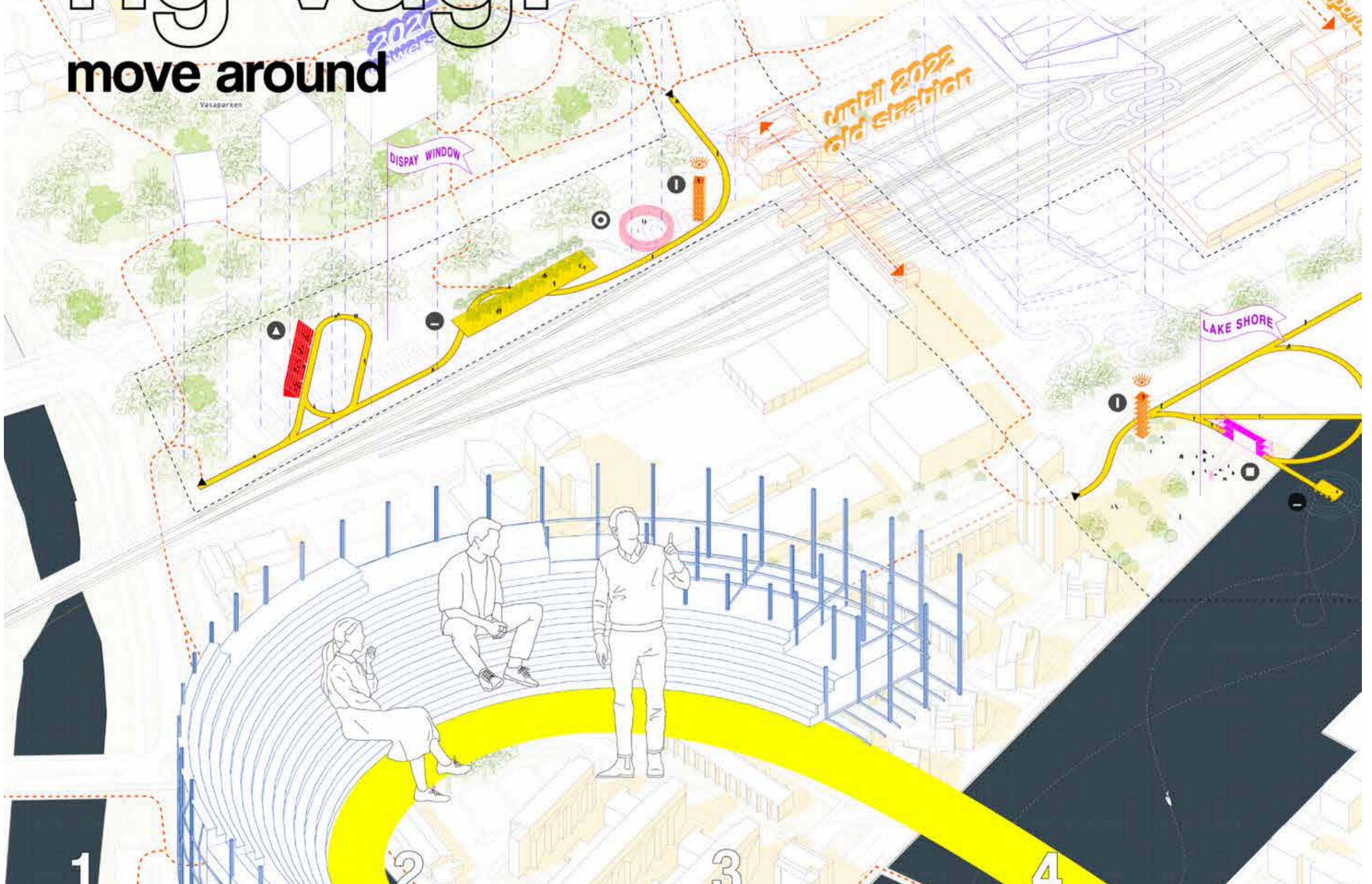
ment ways of living in relation to people's need together with the specificity of the sites.

NY VÄG works at three different scales:

L - at the urban scale, it creates the missing links between the city center and the lake, overcoming the present condition of isolation of Mälarporten.

M - at the district scale, it provides the cycle and pedestrian infrastructure that allows to move around Mälarporten and discover its hidden places.

S - at the public space scale, it connects the fragmented and neglected places of Mälarporten, giving a new reading of its characters and identity and showing possible way to inhabit its places.



WHERE IS MÄLARPORTEN?

Today the area, that consists of inaccessible land, offices and industries, is lacking connections with the city center and it is fragmented by two main barriers, the railway line and Kungsgatan.



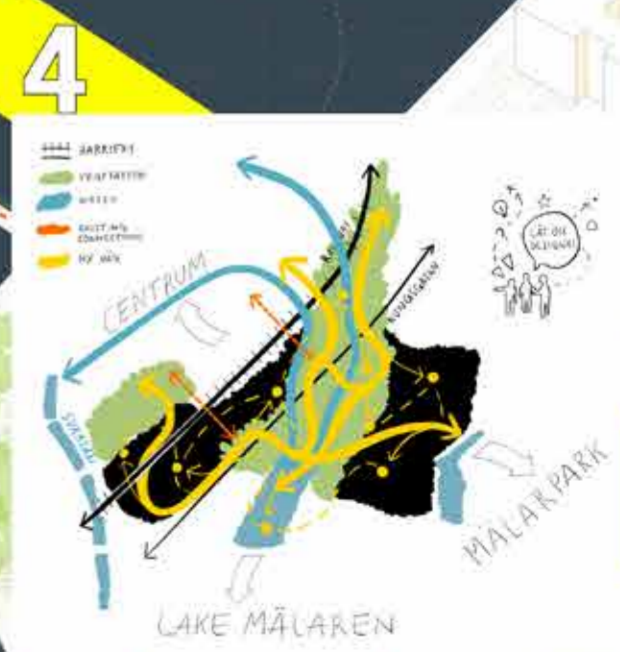
OPEN AND CONNECT

The project starts with the fundamental action that allows people to inhabit an inaccessible space: building the new infrastructure that explores the closed and unknown spaces of Mälarporten and links the district with the city and the lake.



ARCHETYPES - LIVING EXPERIMENTS

The infrastructure is an open system that triggers temporary architecture and public spaces that aim at transforming marginalized spaces into places of exchange, co-learning and imagination. The archetypes, together with the sites qualities and characteristics, build the "places of possibilities", where people can meet, form new stories and memories and build important community values.

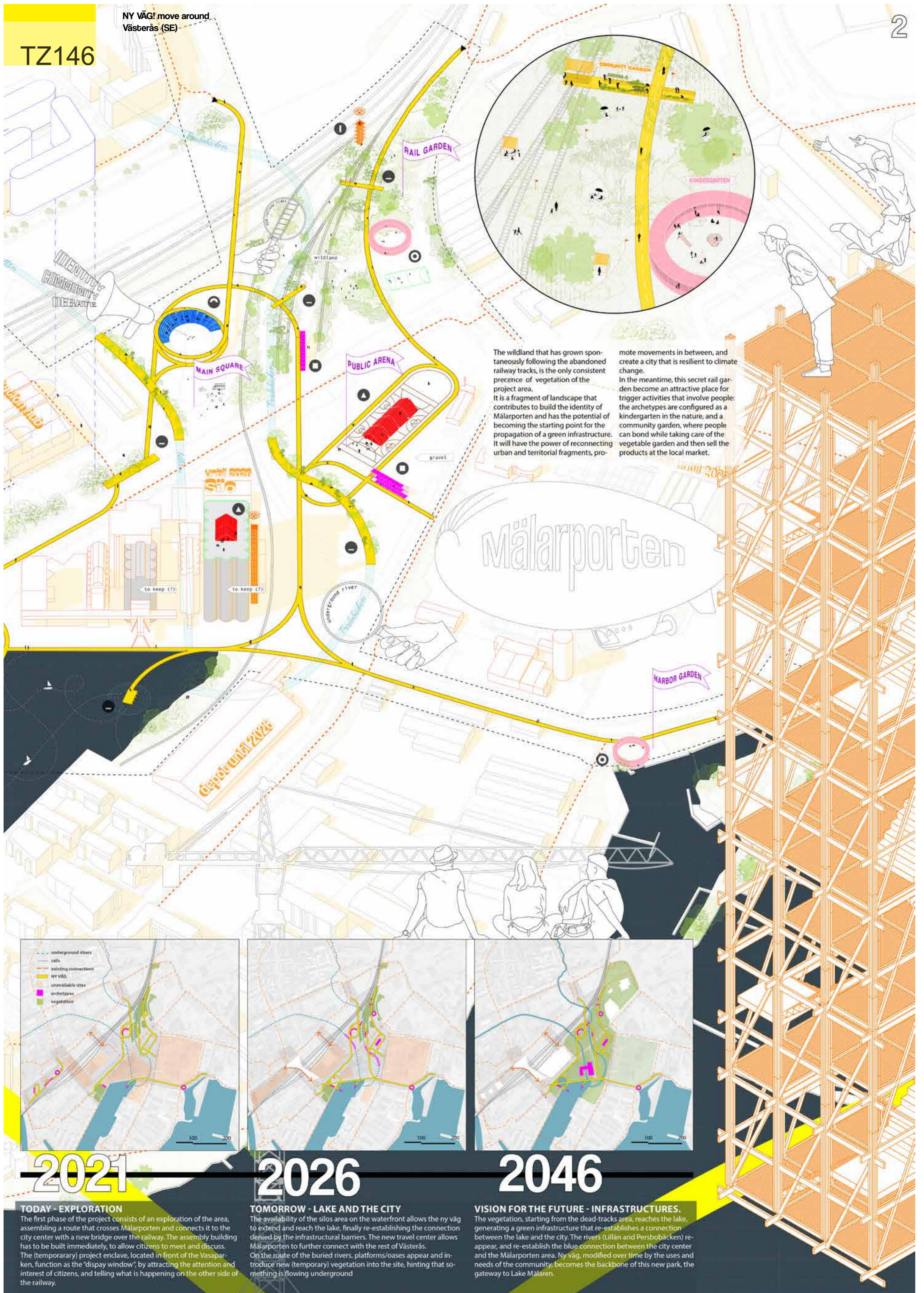


IMAGINE THE FUTURE

The core spine (the yellow path) guarantees more free movements of appropriation and modification: from the main way, new spontaneous paths will take off, determined by people interactions, new uses and proposals, guaranteeing freedom of transformation and incrementation of the project. The archetypes take the various forms imagined by the people, becoming tool for appropriation and discussion.

TZ146

NY VÄG! move around Västerås (SE)



The wildland that has grown spontaneously following the abandoned railway tracks, is the only consistent presence of vegetation of the project area. It is a fragment of landscape that contributes to build the identity of Mälarpöorten and has the potential of becoming the starting point for the propagation of a green infrastructure. It will have the power of reconnecting urban and territorial fragments, promote movements in between, and create a city that is resilient to climate change. In the meantime, this secret rail garden become an attractive place for trigger activities that involve people: the archetypes are configured as a kindergarten in the nature, and a community garden, where people can bond while taking care of the vegetable garden and then sell the products at the local market.



2021
TODAY - EXPLORATION
 The first phase of the project consists of an exploration of the area, assembling a route that crosses Mälarpöorten and connects it to the city center with a new bridge over the railway. The assembly building has to be built immediately, to allow citizens to meet and discuss. The (temporary) project enclave, located in front of the Vasaparken, function as the "display window", by attracting the attention and interest of citizens, and telling what is happening on the other side of the railway.



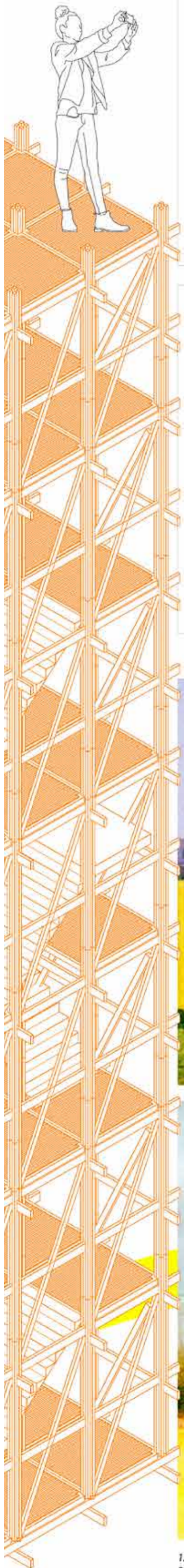
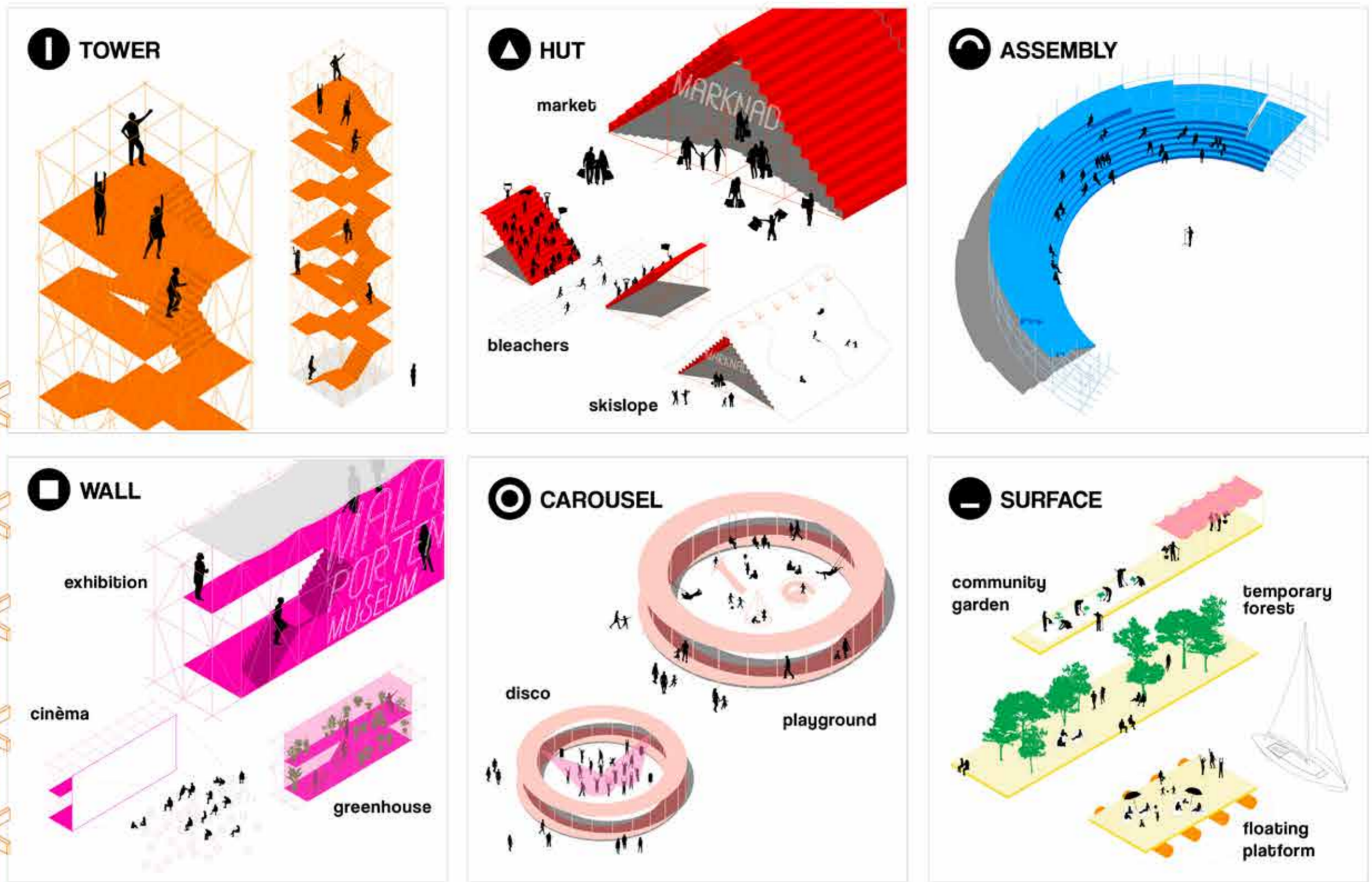
2026
TOMORROW - LAKE AND THE CITY
 The availability of the silos area on the waterfront allows the ny väg to extend and reach the lake, finally re-establishing the connection denied by the infrastructural barriers. The new travel center allows Mälarpöorten to further connect with the rest of Västerås. On the route of the buried rivers, platforms/oases appear and introduce new (temporary) vegetation into the site, hinting that something is flowing underground



2046
VISION FOR THE FUTURE - INFRASTRUCTURES.
 The vegetation, starting from the dead-tracks area, reaches the lake, generating a green infrastructure that re-establishes a connection between the lake and the city. The rivers (Lillån and Persbäck) re-appear, and re-establish the blue connection between the city center and the Mälarpöorten area. Ny väg, modified over time by the uses and needs of the community, becomes the backbone of this new park, the gateway to Lake Mälaren.

ARCHETYPES - USES AND TRANSFORMATIONS

If the path allows you to explore and get to know the place, the buildings allow you to inhabit it. Archetypes are the fundamental tools for implementing the settlement activity and define places. They were designed with primordial activities / uses in mind, such as watching or observing (tower), protecting oneself (the hut), discussing (the arena), resting (the platforms), playing (the carousel). Archetypes are open structures, which allow for transformation over time according to uses, needs (and even seasons). They are modular, demountable and transportable. This means that over the years they can be organized in different configurations, depending on the needs of the community, and the transformations that will affect Mälarporten.



välkommen till Mälarporten!



1. view of the bridge over the railway - new connection
2. view from the path - rail garden
3. view from the temporary cinema and the silo

NY VÄG: POSTCARDS FROM THE FUTURE

OUTCOMES

The aim of the project is that of outlining a possible new way for people to inhabit what now is perceived as an hostile land, by giving them the platform and the tools to read the existing (sometimes hidden) qualities, to re-imagine and to experience together how Mälarporten can become an inclusive and sustainable part of their city and how they can actively contribute to build and transform it. The project of course has a strong temporary connotation, which allows a freedom of experimentation and an ability to metabolize new changes and transformations, but at the same time it functions as a space-time dimension where permanent community values and identity are incrementally built.

NY VÄG, as a temporary physical experiment, expects a permanent outline that is people interactions and relationships between them and between their community and the city space.

NY VÄG is the time and space where people build the memory of the place, the wishes for the future and the values from which to start.

